

UNF 1/4-28

F-1

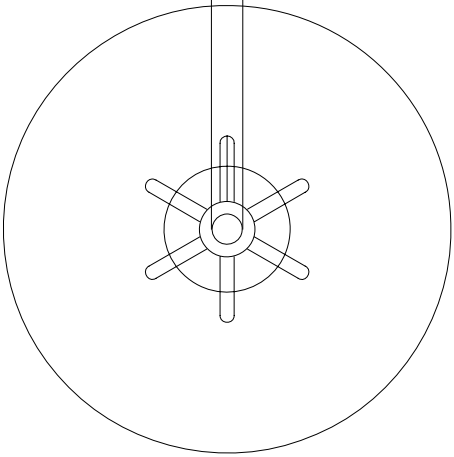
6m.m. B

6m.m. P

MADE IN JAPAN

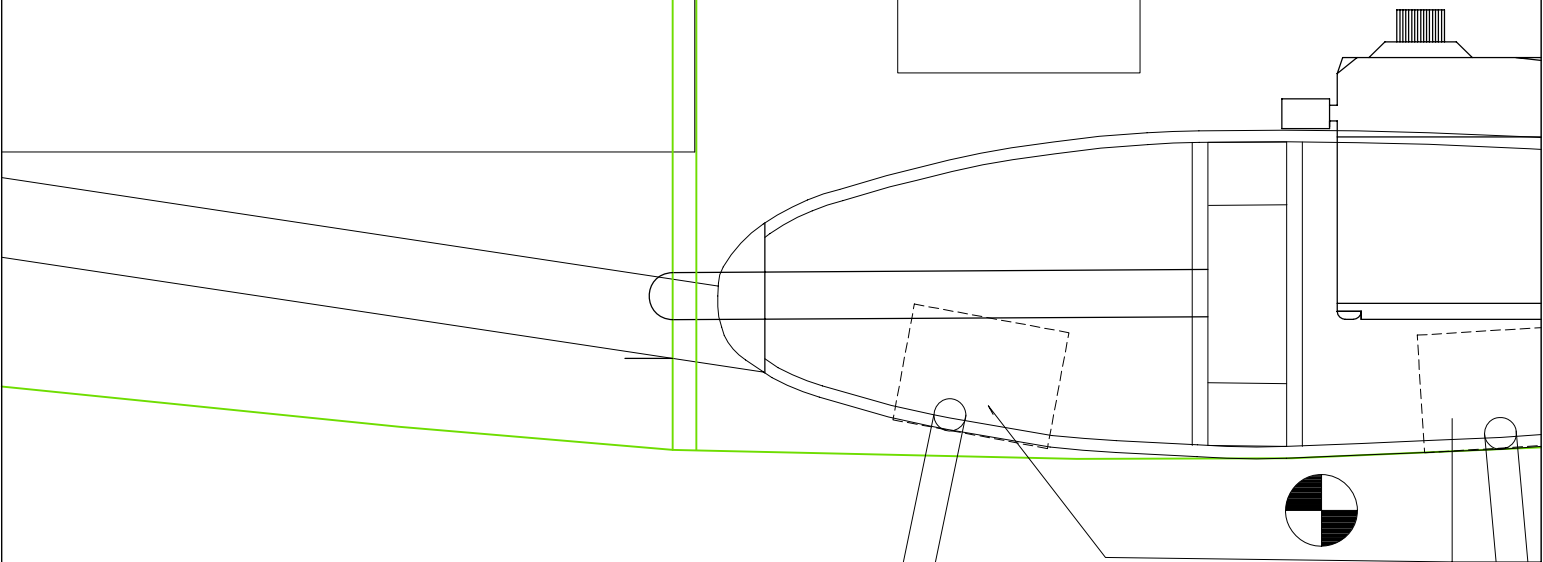
F-9

Plywood 3 m.m.

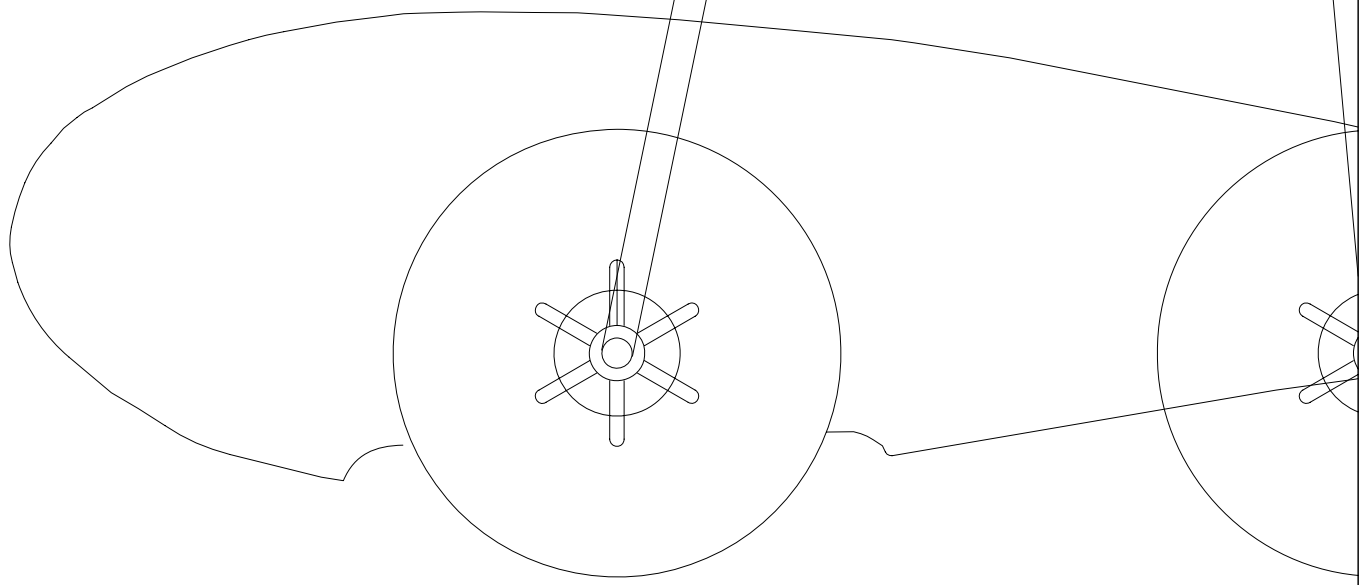


ALSA

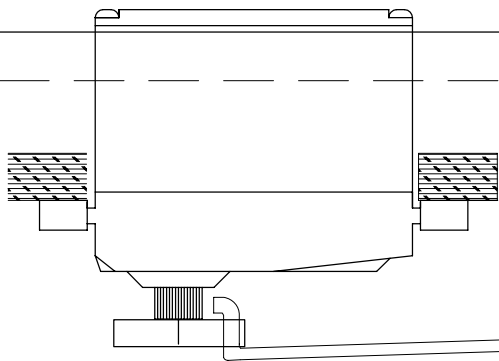
LYWOOD



4m.m.WIRE MAIN GE

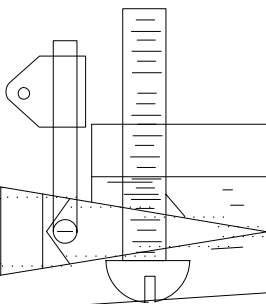


Futaba Standard Size Servo



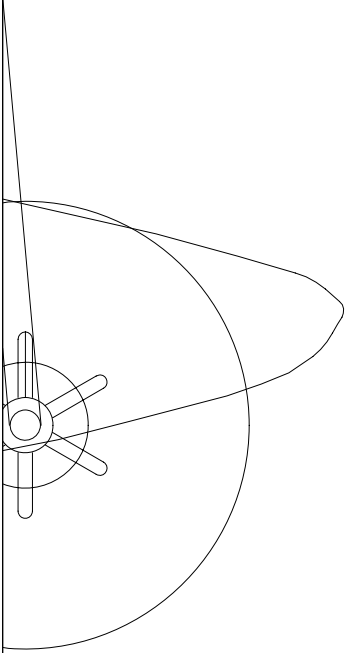
F-5

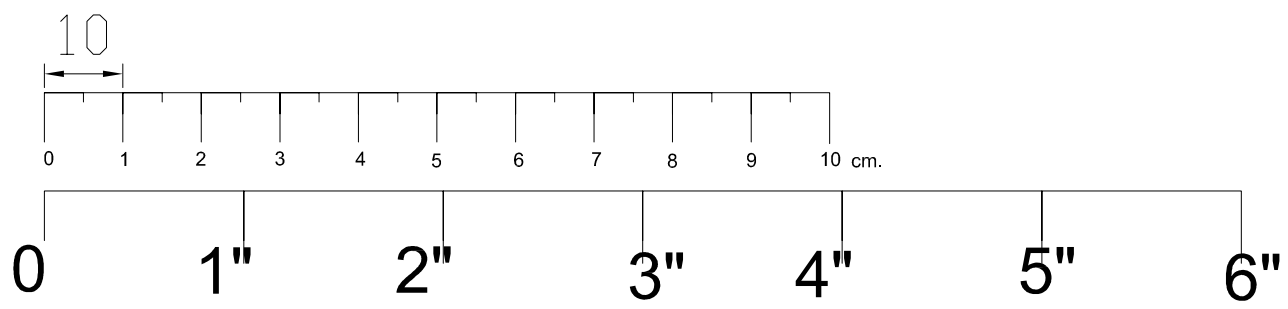
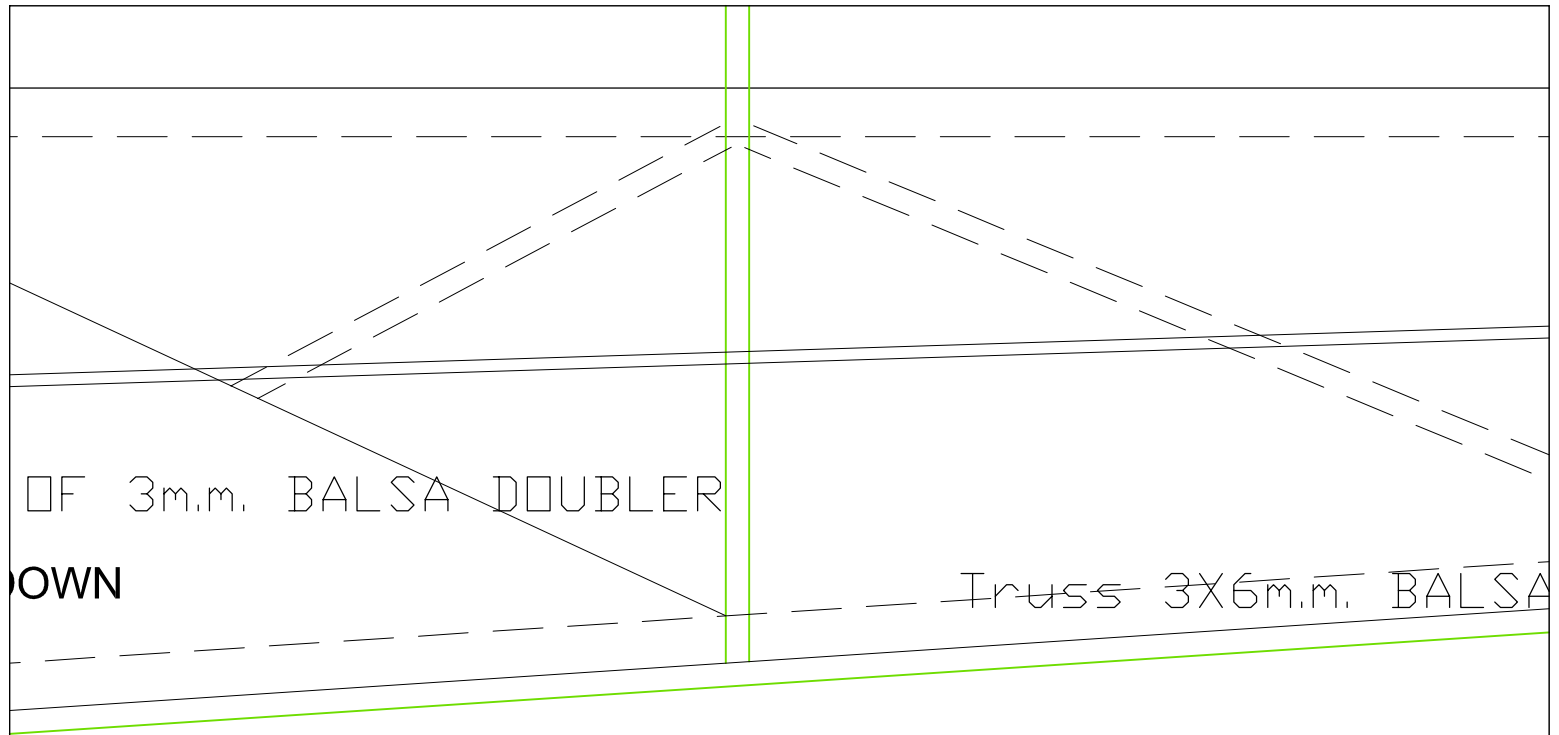
END
WING HOLD D

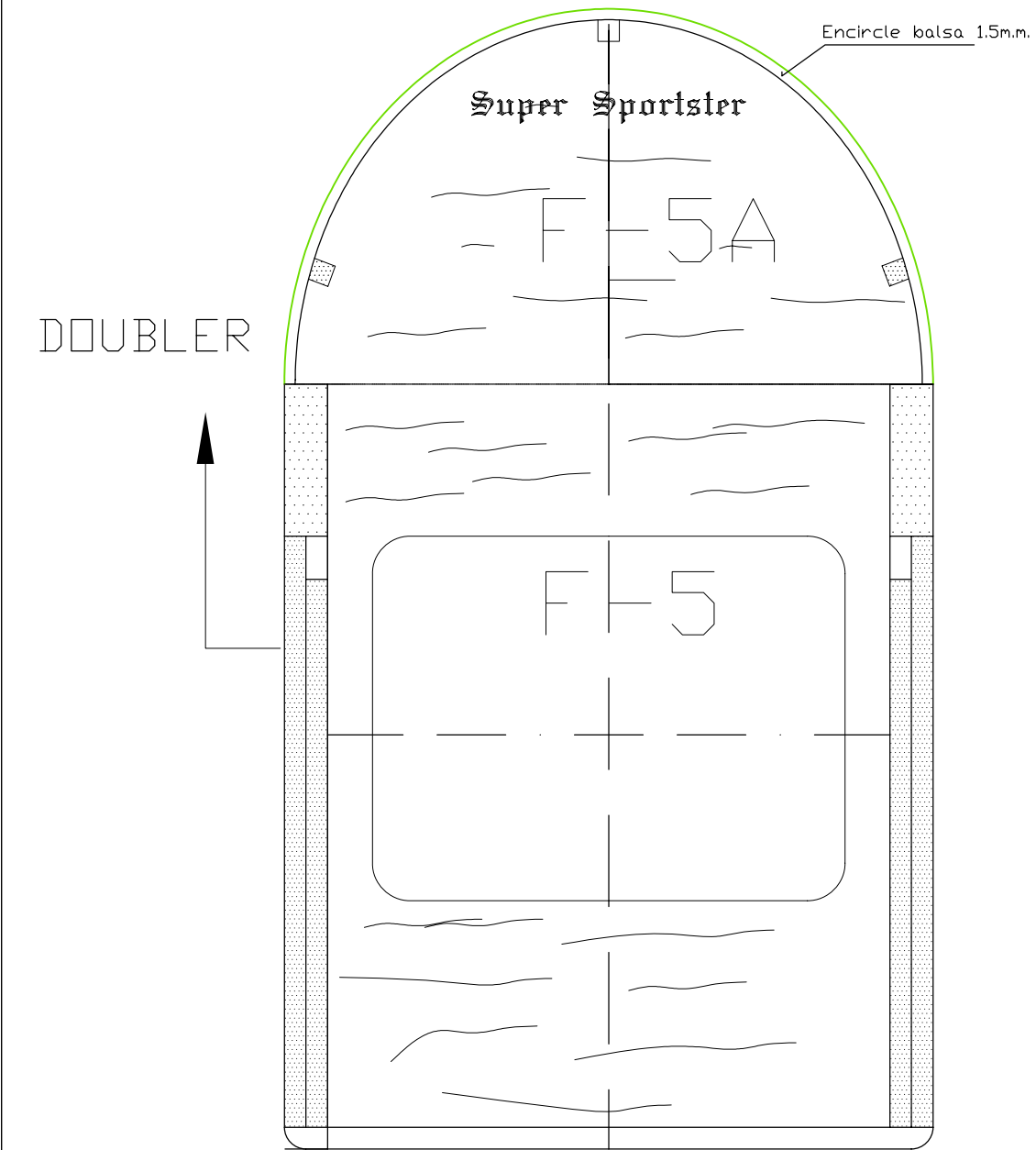
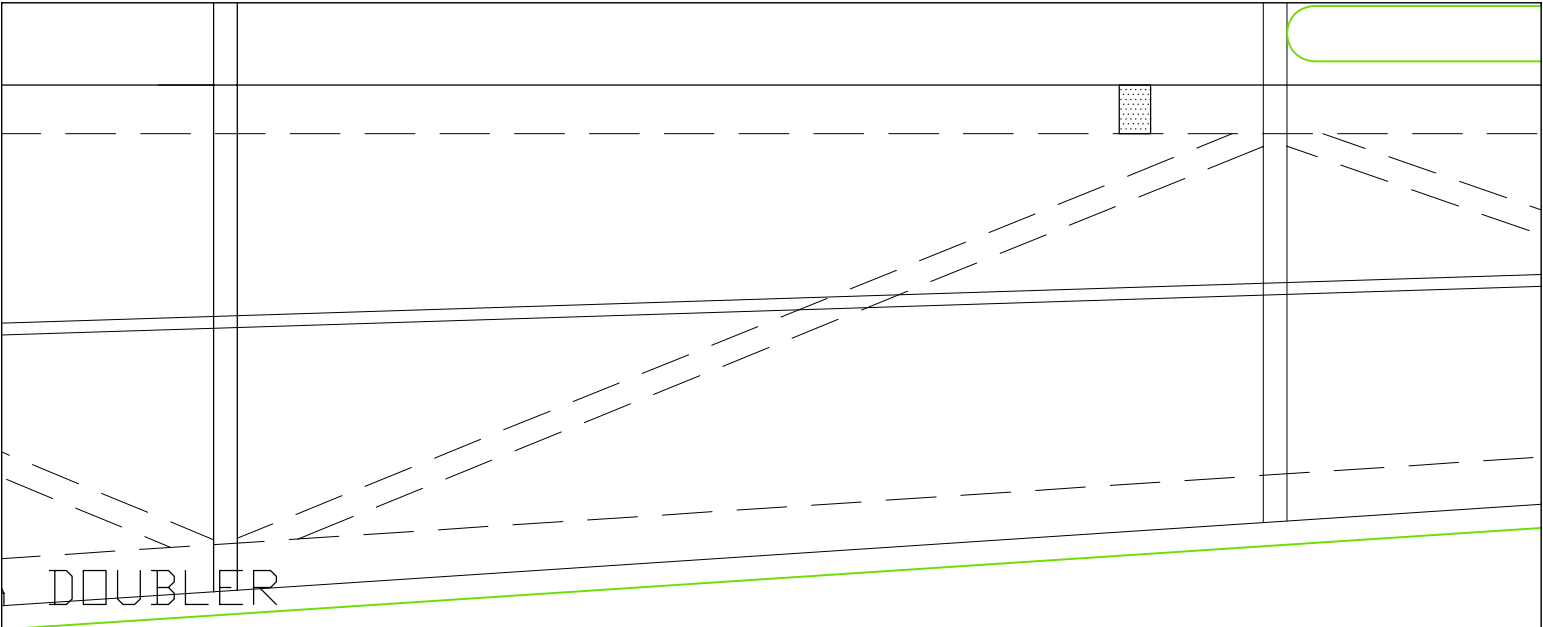


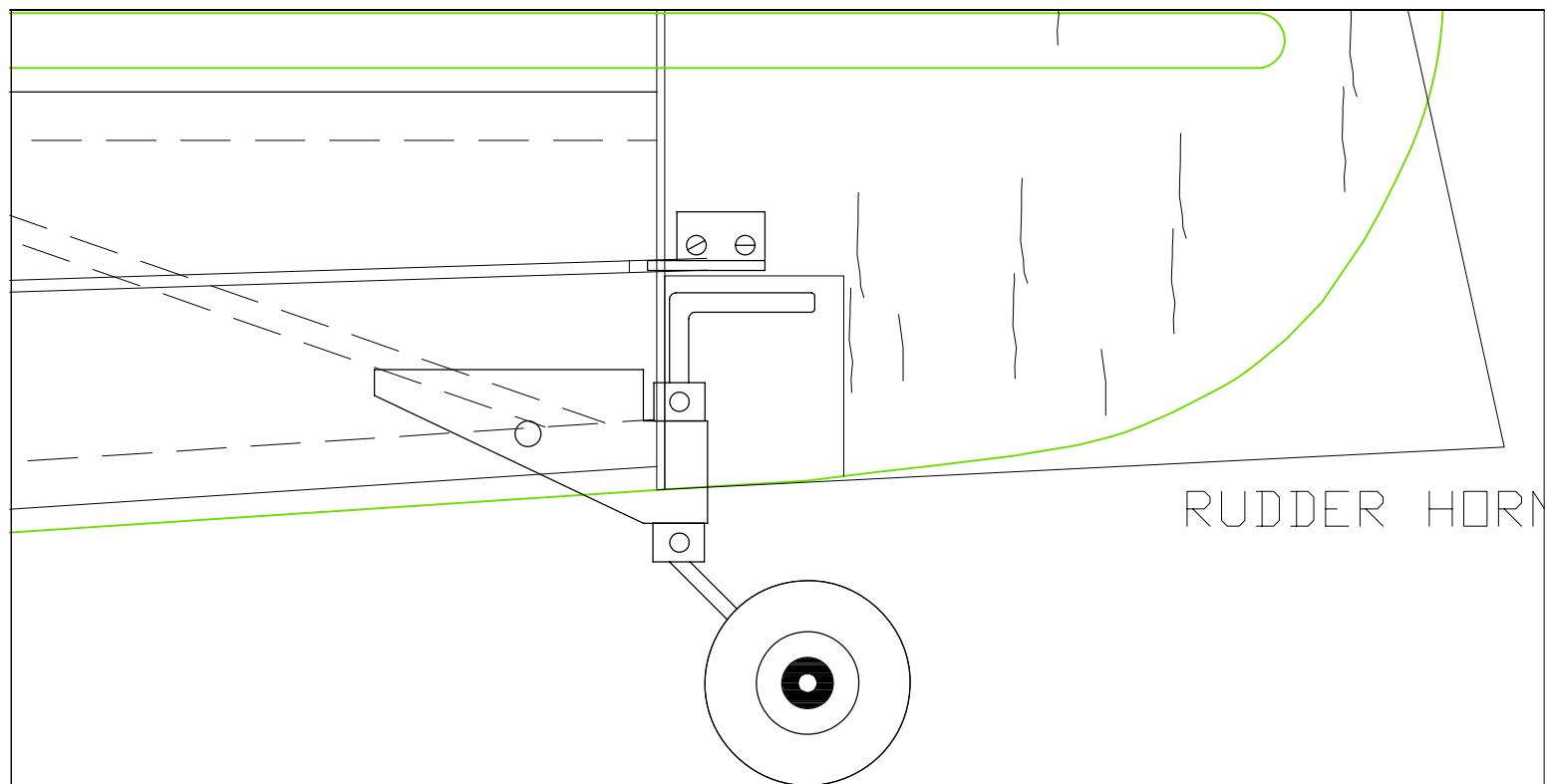
LANDING GEAR MOUNT

AR-TAIL-DRAGGER

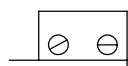








Tailwheel Bracket for 25mm Aircraft

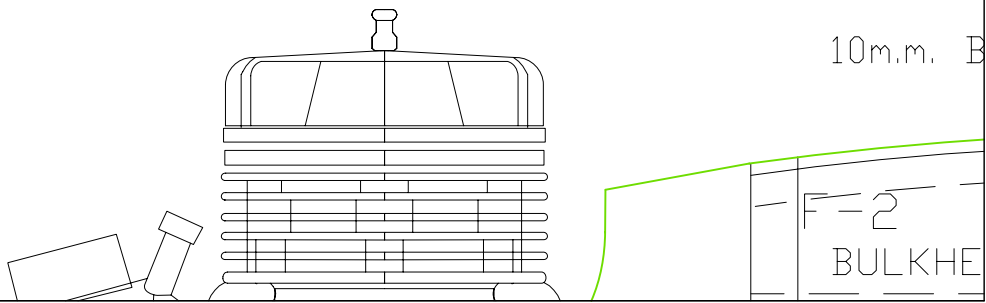
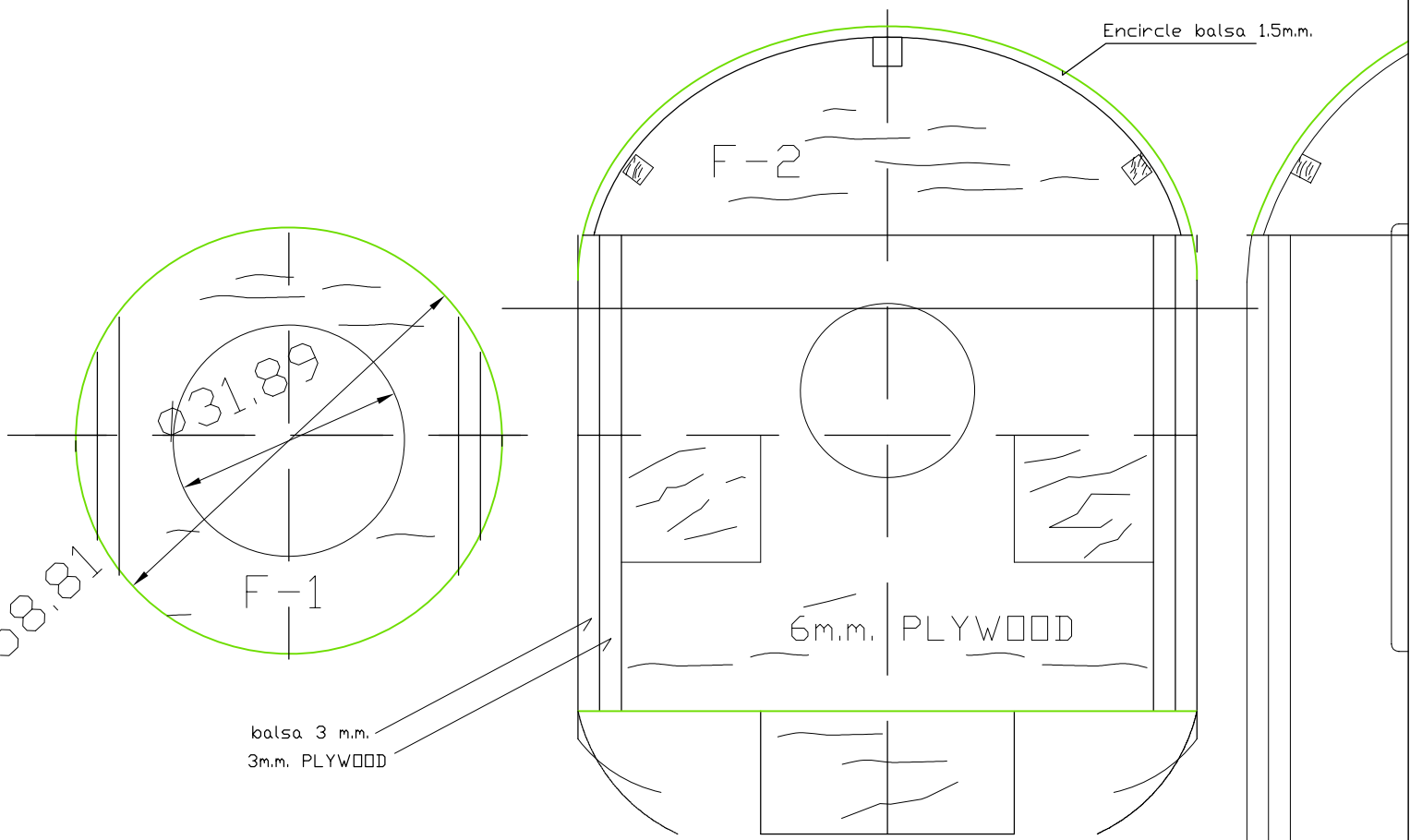
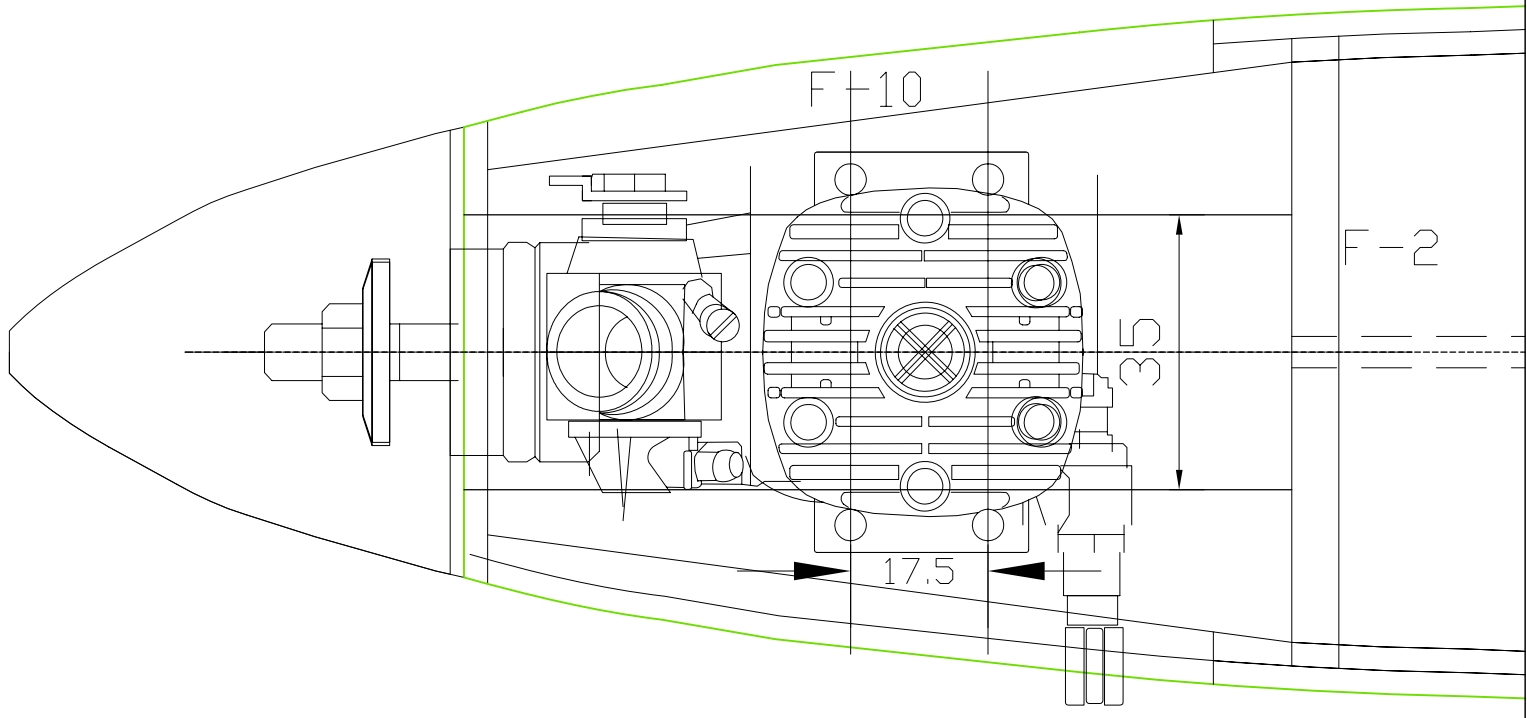


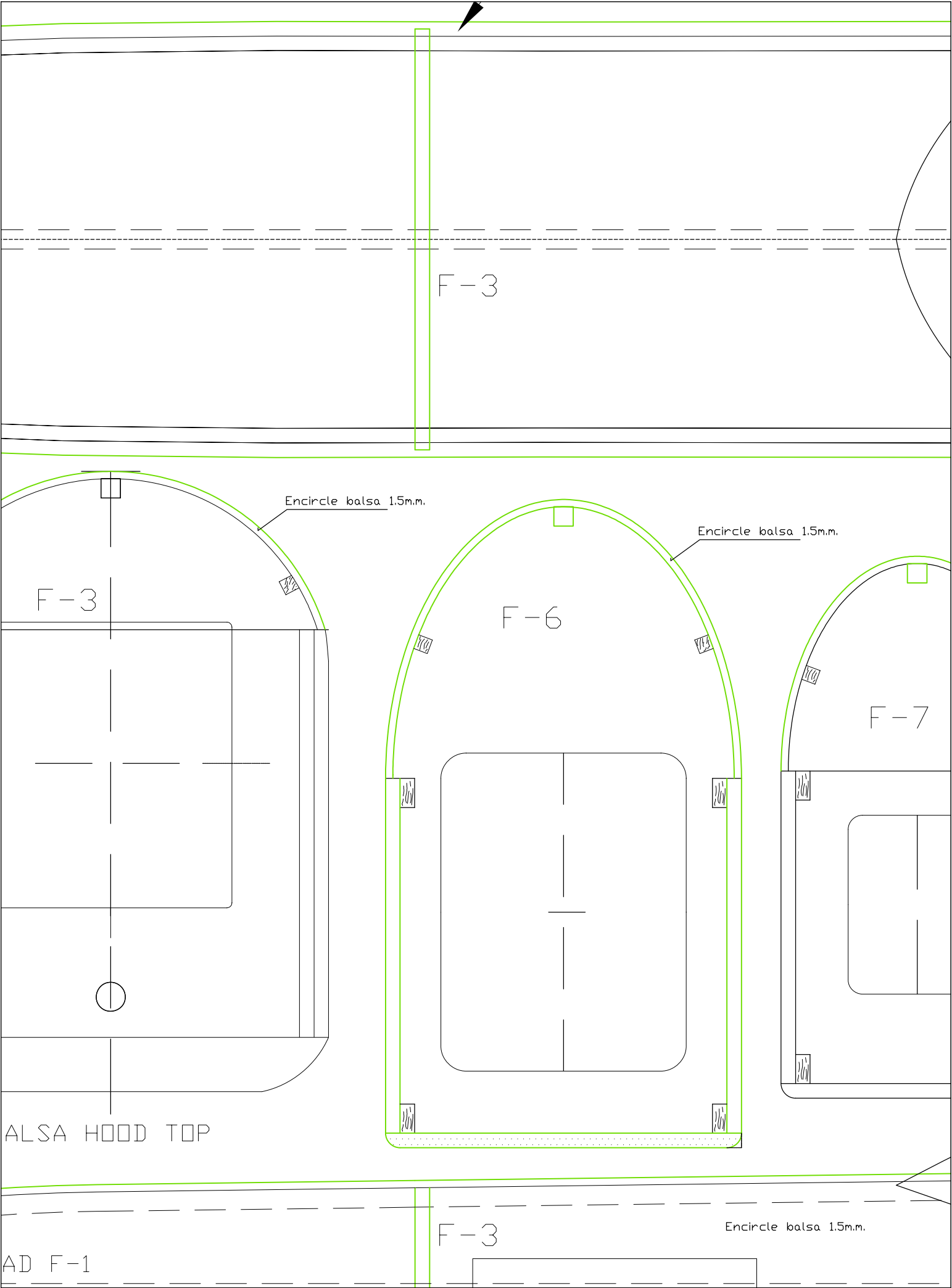
Std. Control Horn

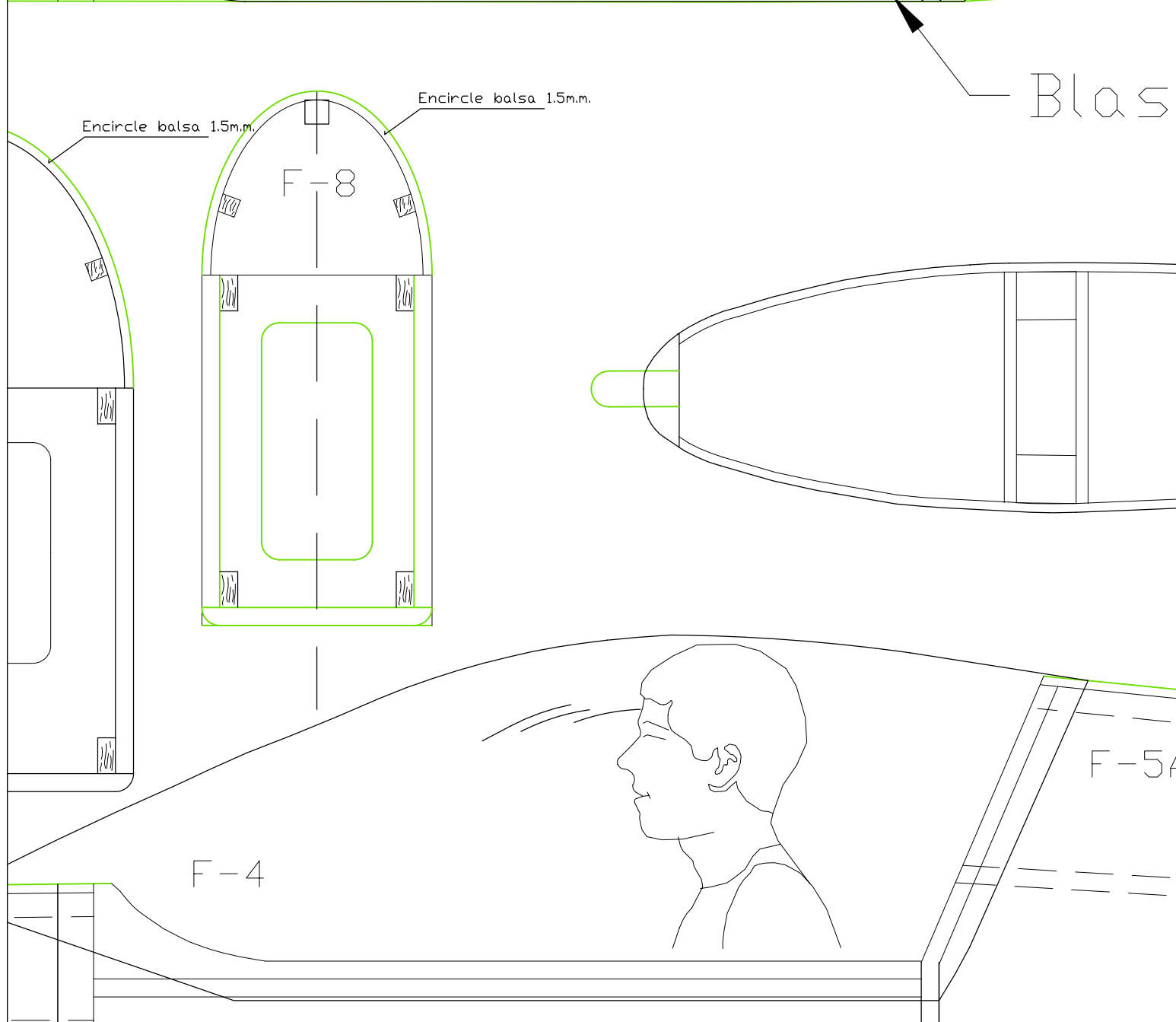
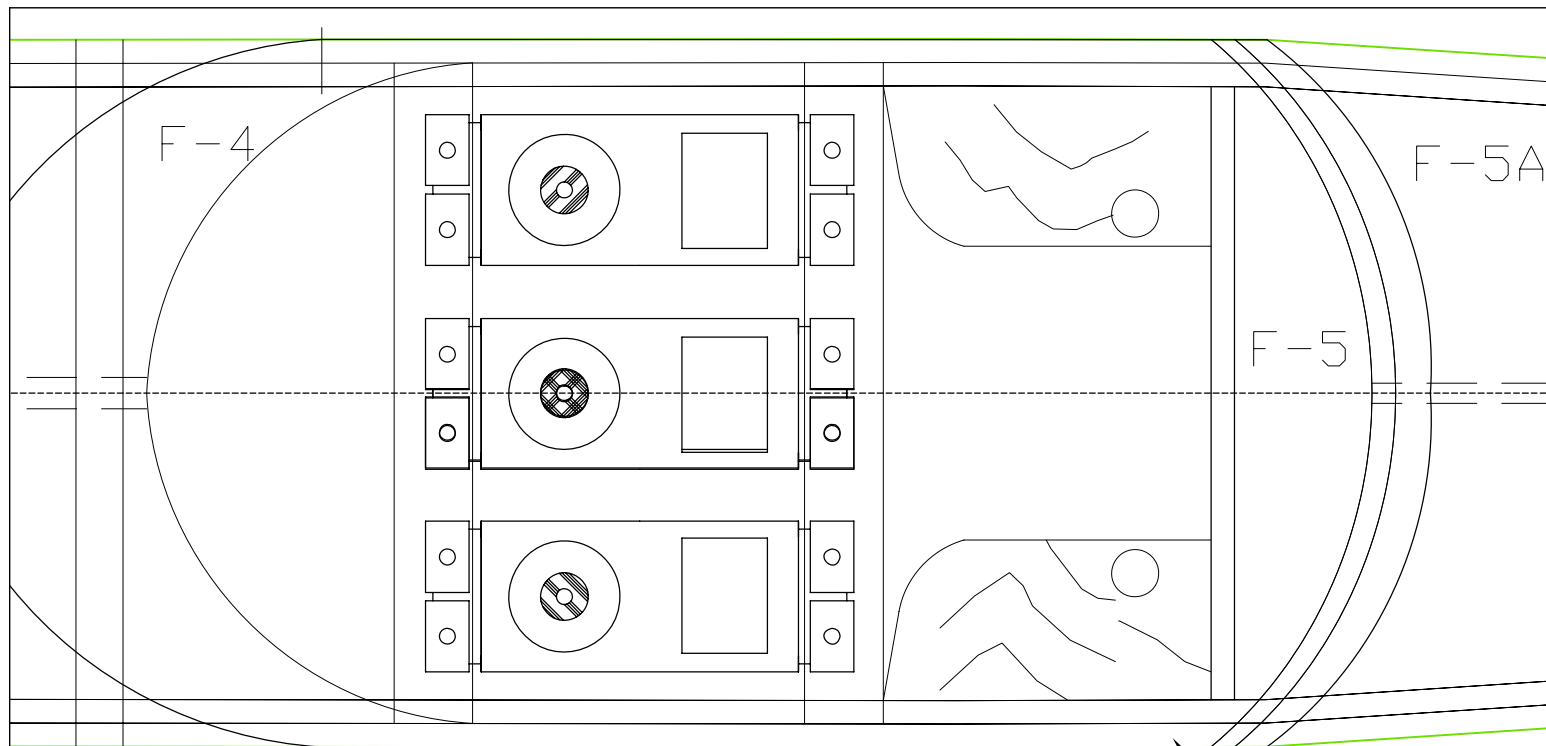
Sportster Thaidition

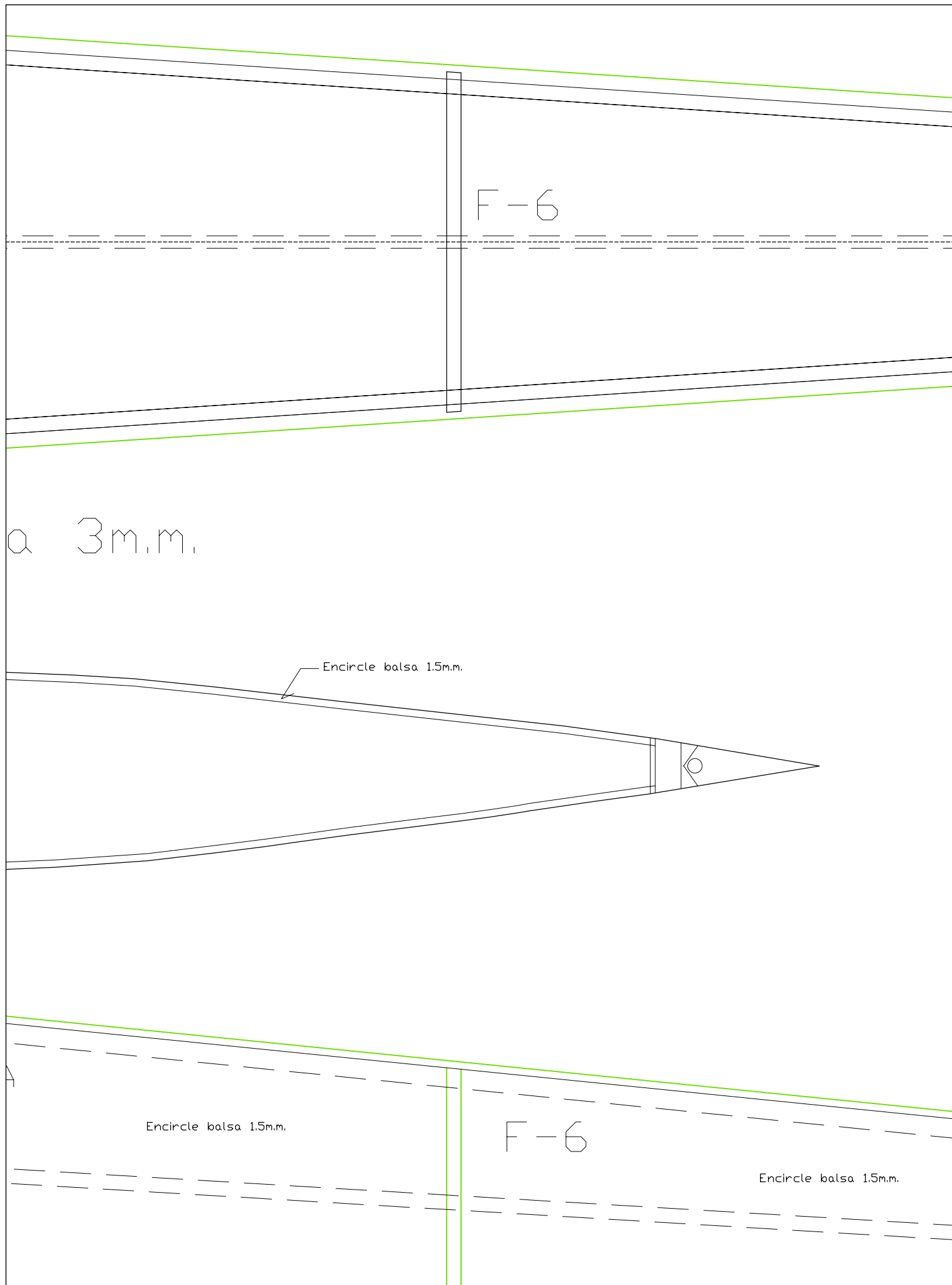
DESIGNED&EDIT: Mr.CHALERMPON HAMHUNSA

WINGSPAN	56"
WING AREA	552.5 SQ.IN
LENGTH	45.6"
POWER	OS .46
RADIO	4 CHANNEL
WEIGHT	2750g









F-7

90°

92.8

91°

Super Sportster

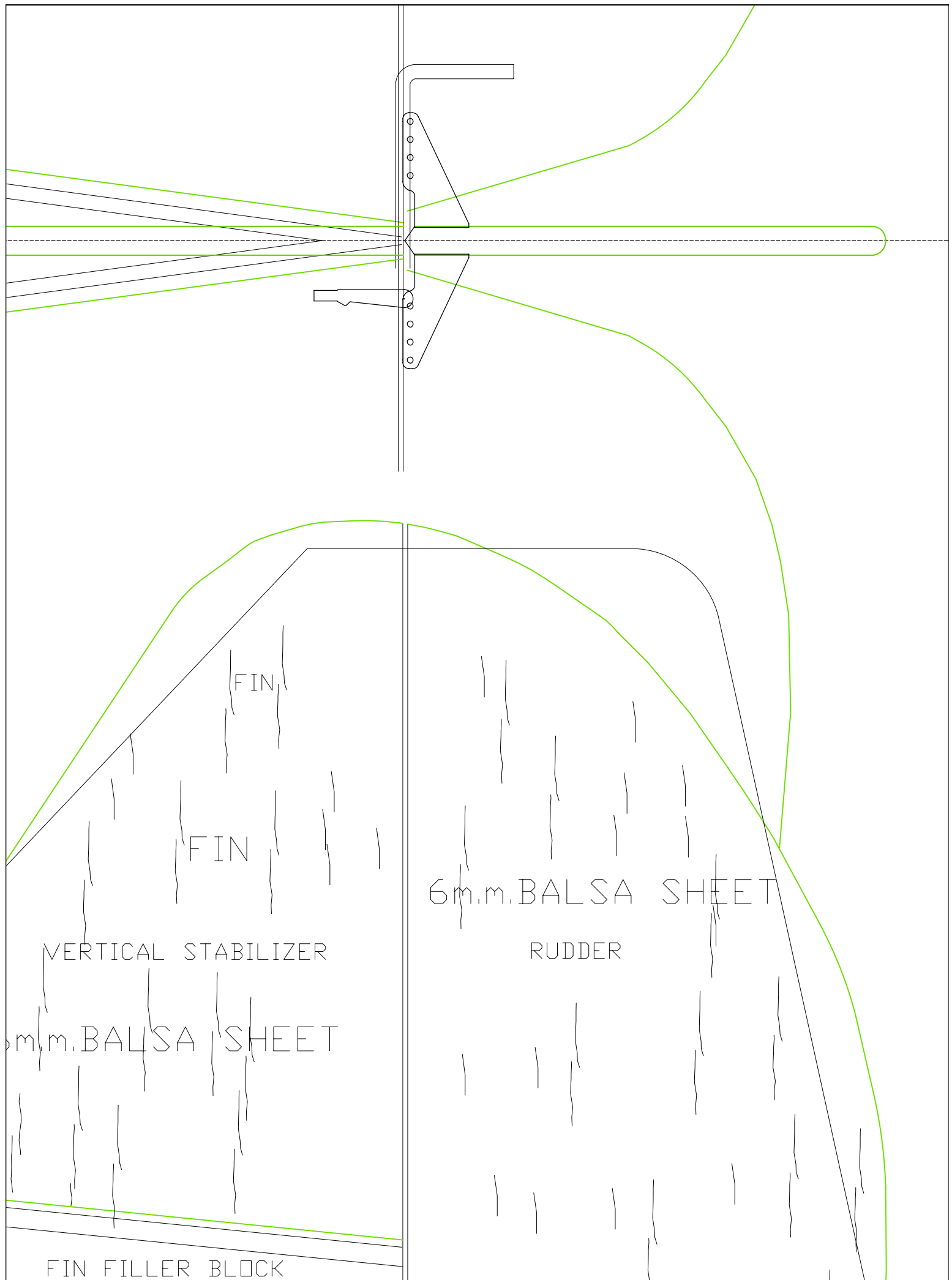
F-4

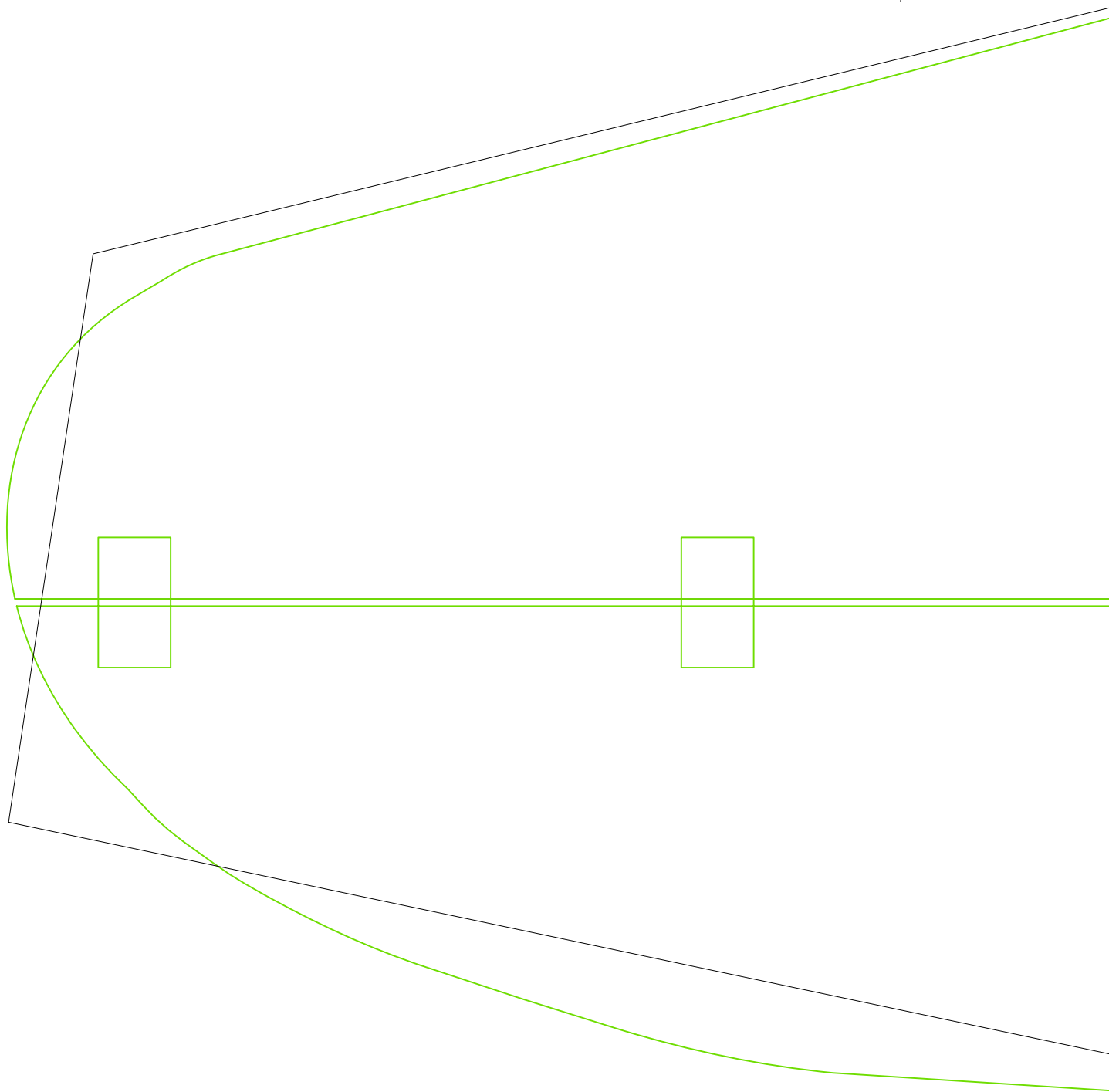
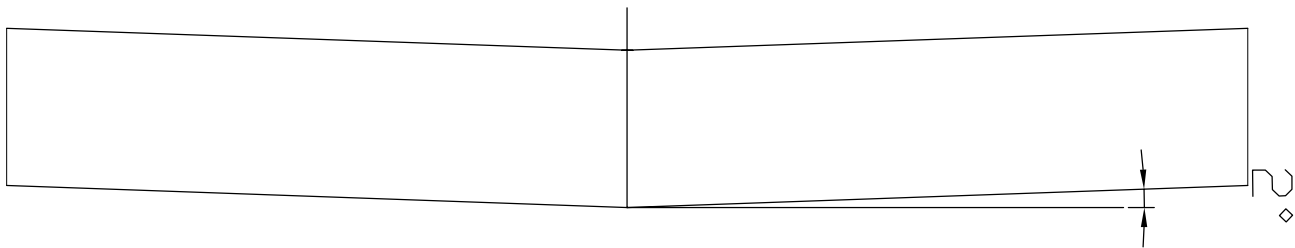
91.9

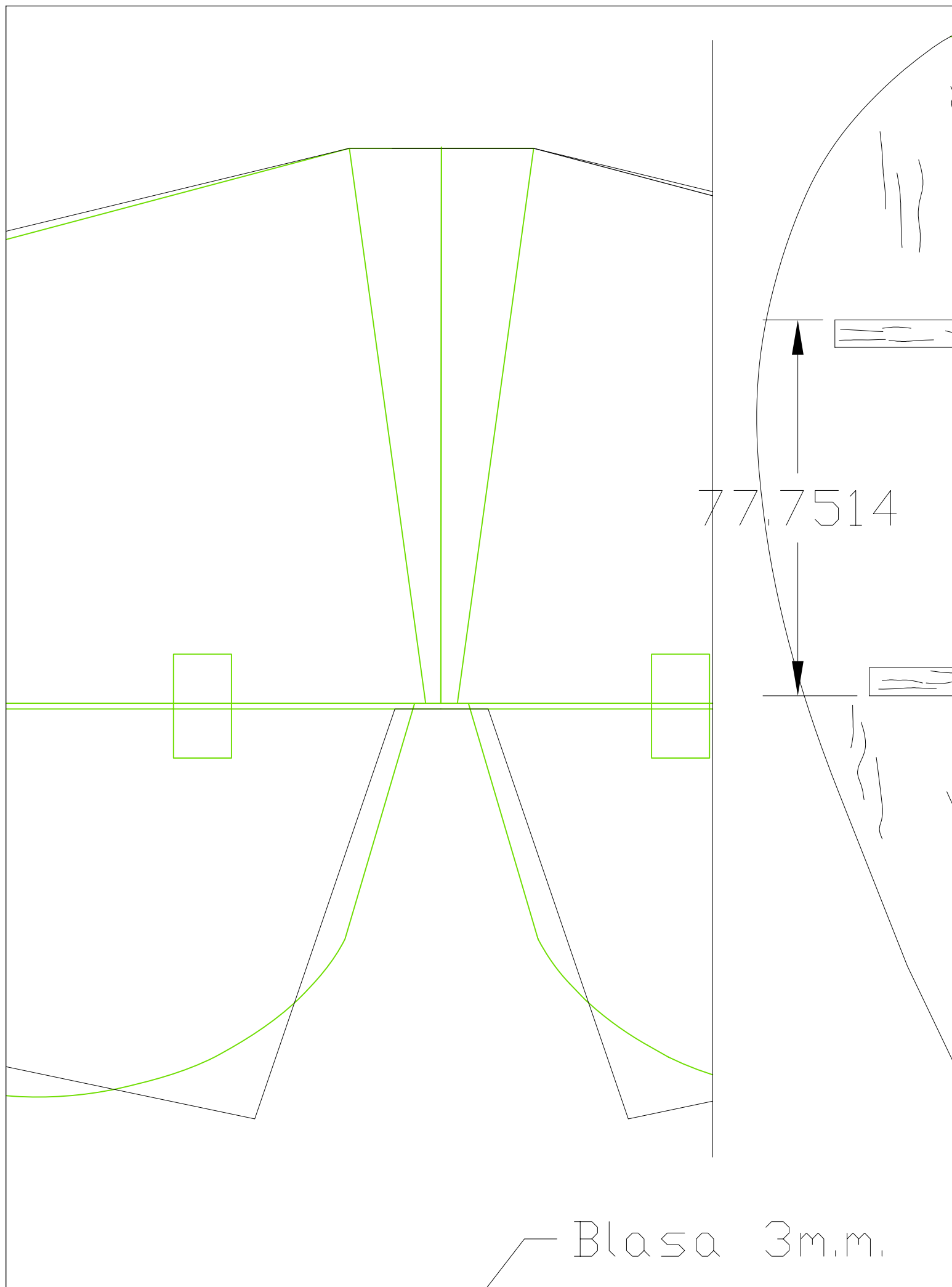
40.7

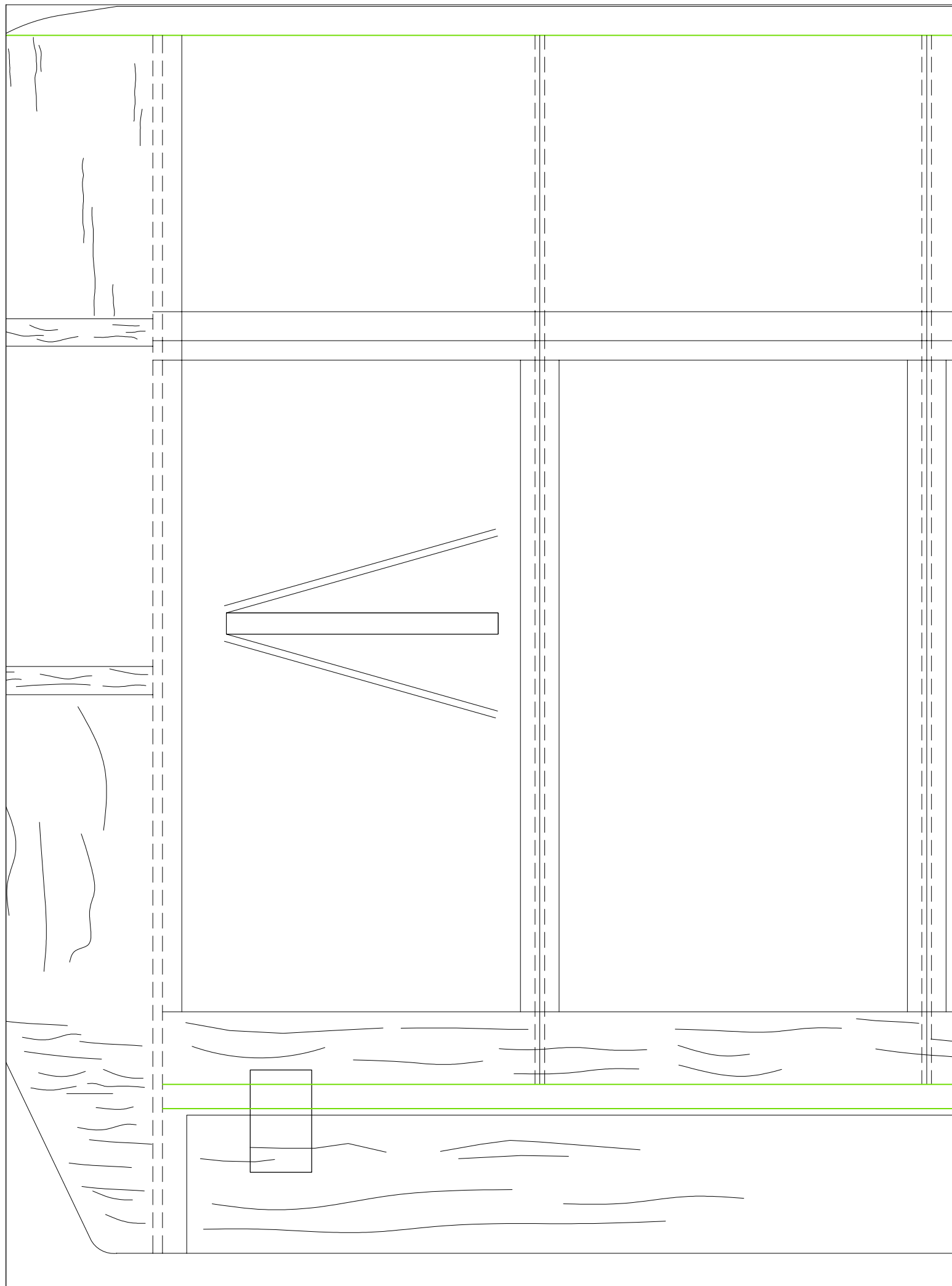
F-7

F-8



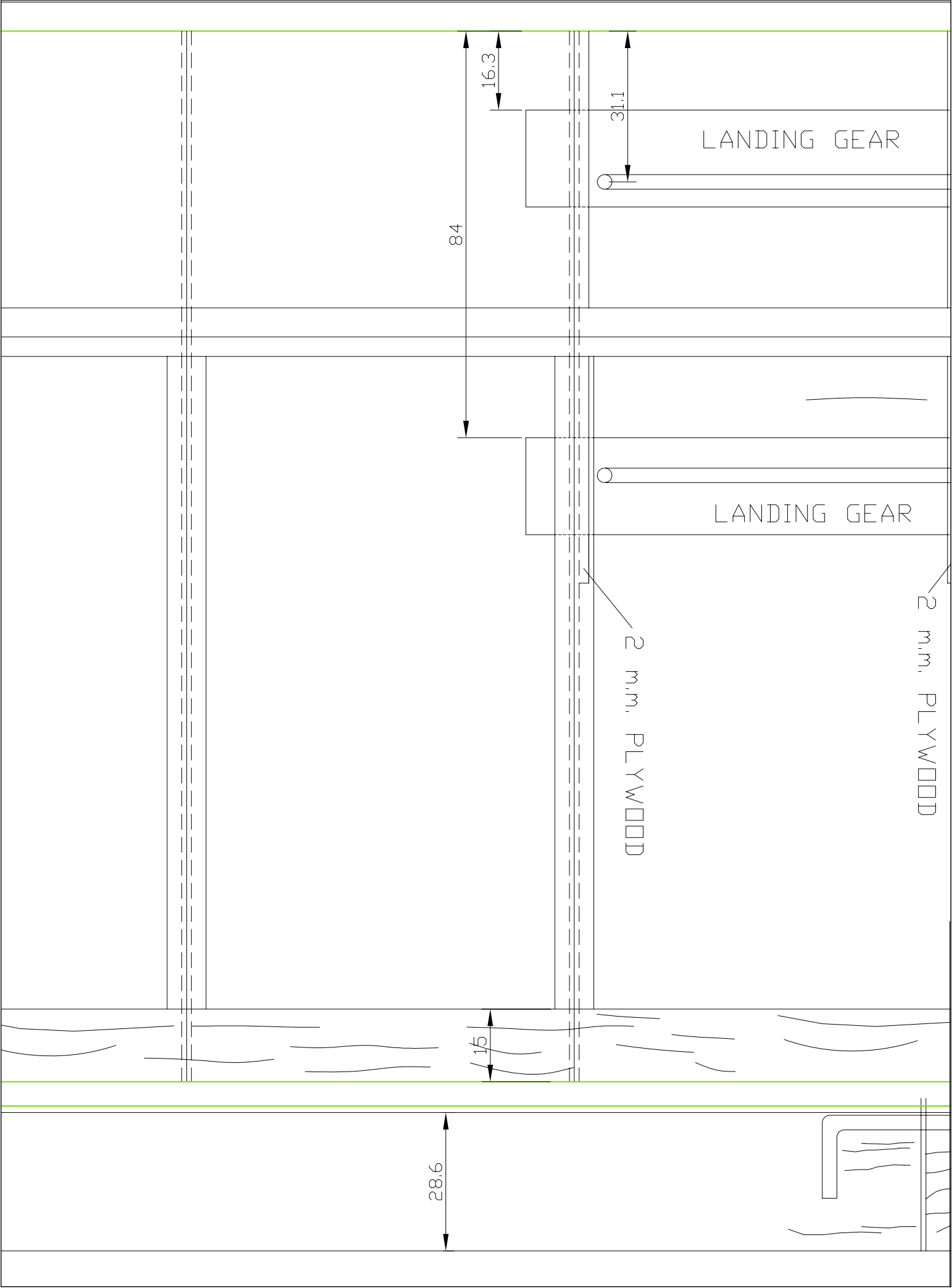


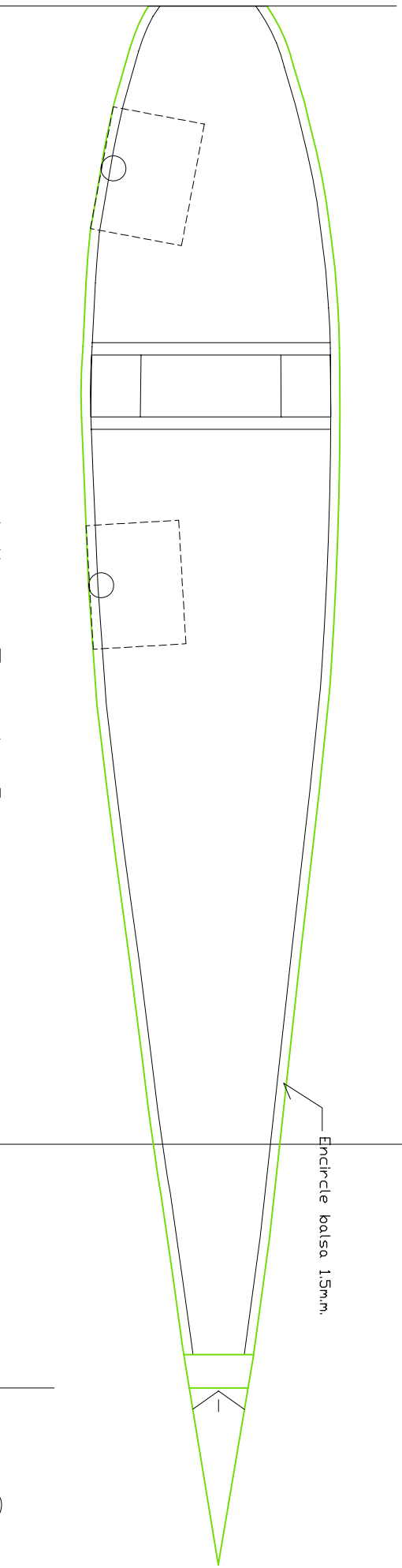




8X10 m.m. SPARS BALSAS

RIB 2m.m. Balsa





Encircle balsa 1.5mm.

Wing Root Span

